

# LEM

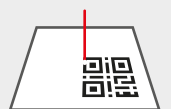
The workstation designed for any industry to **mark any component** from **surface** marking to **very deep** engraving applications



LEM



Discover the potential of the LS-Lab at  
[lasea.eu/produits/machines-laser](http://lasea.eu/produits/machines-laser)

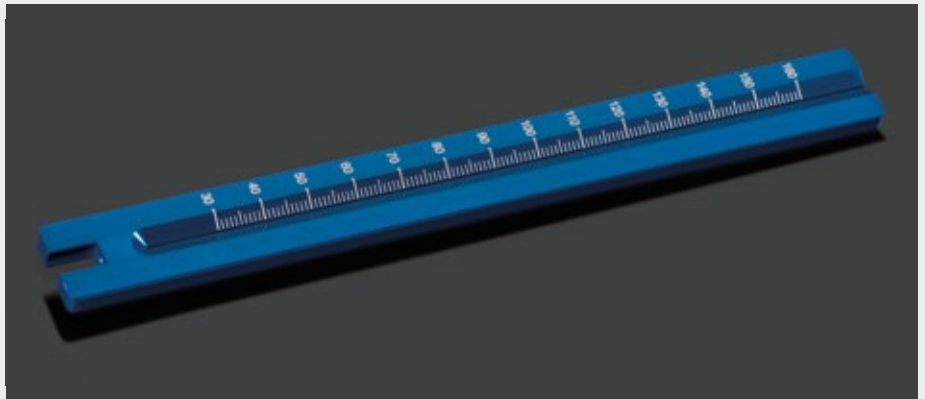


# LEM

## HIGHLIGHTS

Powerful and flexible, the compact LEM station and its options are designed to adapt to a wide range of marking needs on any material.

- ▶ Fully sealed, reduced maintenance
- ▶ Easy access to the processing area
- ▶ Fast movement from one marking area to another
- ▶ No mechanical contact, no moving part, no tool wear

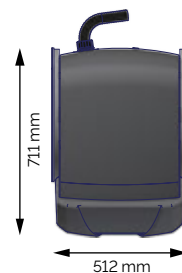
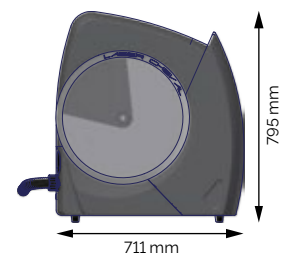
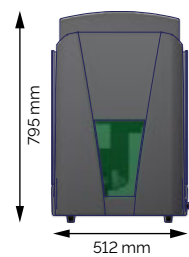



### Standard equipment:


- ▶ Nanosecond fiber laser (20W to 50W) in Near-IR
- ▶ Galvo scan head for laser beam motion
- ▶ Mechanical Z axis of 350mm
- ▶ 160mm lens (other lenses possible as options)
- ▶ LENS control software (under Windows)
- ▶ Fume extraction system
- ▶ User training

### Services / Options :

- ▶ LASERCAM proprietary software (positioning by video assistance or through the scanner)
- ▶ 3X VISION or other vision lateral vision systems
- ▶ Rotary axis
- ▶ Service contracts



 ± 100 kg

 1.1 kW